

# ULTRA COMPACT SCANNING SONAR

## ECHOLOGGER MRS900

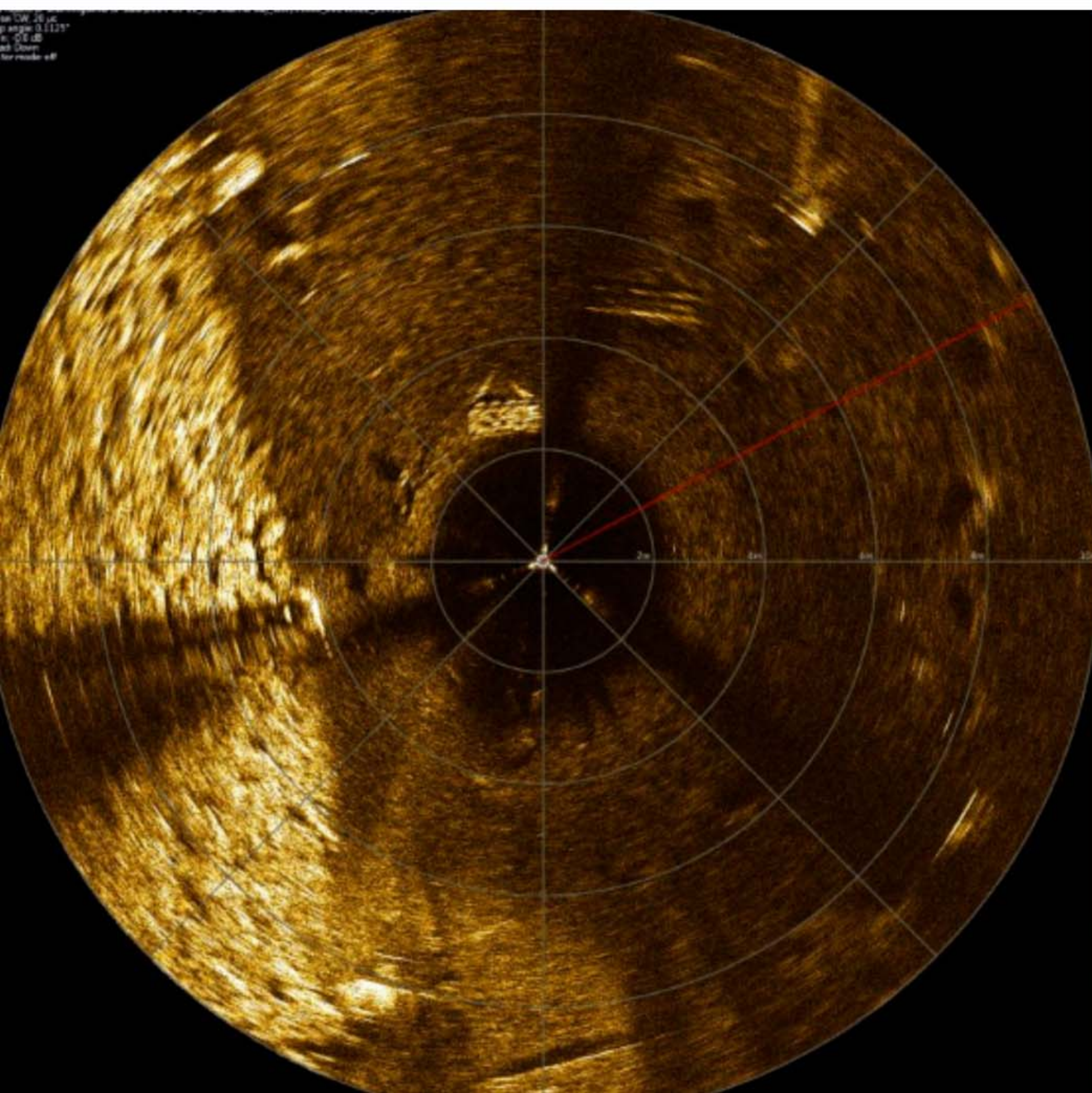


### APPLICATIONS

- Search & Recovery
- Diver-held sonar
- Navigation for ROV/AUVs

### FEATURES

- One of the most compact imaging sonar in the market
- Real time underwater imaging using acoustics
- High resolution images with a piezo-composite broadband transducer
- Digital CHIRP technology
- Non-contact rotational scanning mechanism
- Easy deployment
- Ideal for mini ROVs and diver sonar



## SPECIFICATION

---

<b>Pulse Type</b>	Chirp & CW (selectable)
<b>Operating Frequency</b>	900 kHz
<b>Beam Width</b>	2° H, 25° V (+/-3dB) Fan
<b>Transmit Pulse Length</b>	500µsec(Chirp), 10 ~ 100µsec(CW)
<b>Max Range</b>	60m
<b>Range Resolution</b>	7.5mm Max
<b>Scan Angle</b>	360° continuous or defined Sector Scan
<b>Scan Angle Resolution</b>	0.1125°, 0.225°, 0.45°, 0.9°, 1.8° (selectable)
<b>Scan Speed</b>	4sec / 360° @ range 5m, scan resolution 0.9° 6.4sec / 360° @ range 10m, scan resolution 0.9°
<b>TVG</b>	60dB
<b>Gain Control</b>	-10 ~ +10dB
<b>Interface</b>	RS232 / RS485 up to 3Mbaud
<b>Power Requirement / Consumption</b>	12 ~ 60VDC / 4W Max.
<b>Max Cable Length</b>	300m @ 2Mbaud, 1km @ 115kbaud
<b>Connector</b>	Teledyne Impulse IE55-1206-BCR
<b>Operating Depth</b>	2,000m
<b>Housing Material</b>	Alumium (hard anodised)
<b>Dimensions</b>	Dia. 66m, Height 76m
<b>Weight</b>	580g (in air) / 350g (in water)

---